

MATERIAL: SEE B/M
 DRAWN: MBV
 SCALE: NONE

CHECKED: DEP
 DATE: 9/13/00

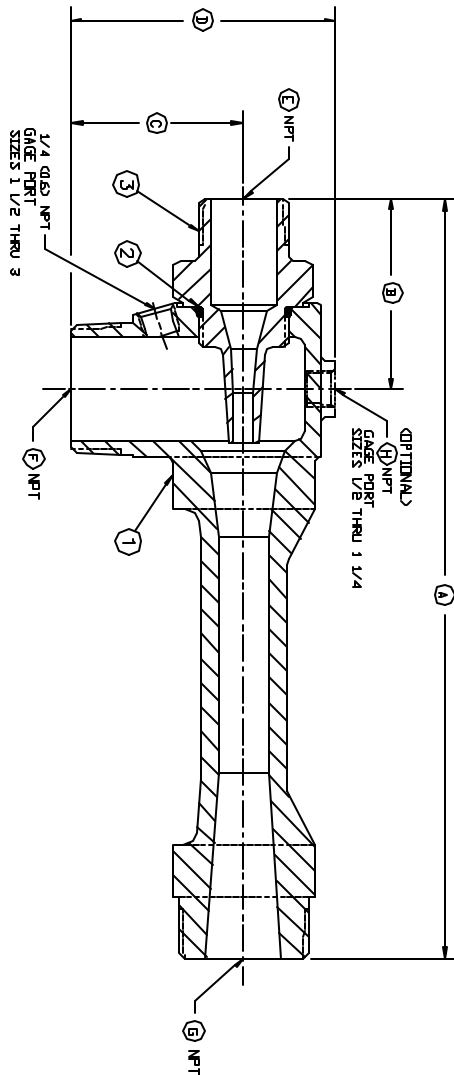
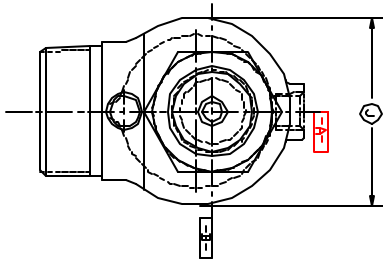


ASSEMBLY EDUCATORS
 STANDARD NPT CONNECTIONS

FILE NO.: E400-01.DWG

Section: E400
 Bulletin: E400 1
 Date: 9/13/00
 Supersedes: NEW

| ITEM | DESCRIPTION |
|------|----------------|
| 1 | BODY |
| 2 | O-RING, NOZZLE |
| 3 | NOZZLE |



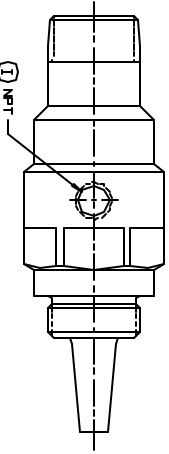
STANDARD CAST UNIT

| MODEL | SIZE | INCHES (MM) | | | | NOZZLE DRAIN PORT LOCATION | | | | | | | | |
|---------------------|-------|-------------------|--------------------|-------------------|--------------------|----------------------------------|--------------|-------------|-------------|-------------|-----------|-----------|--------------|---|
| | | W/STANDARD NOZZLE | W/GAGE PORT NOZZLE | W/STANDARD NOZZLE | W/GAGE PORT NOZZLE | | | | | | | | | |
| SL MLHSRHMJHJLME | 1/2 | 4.500 (11.4) | 6.000 (15.2) | 1.825 (4.1) | 3.125 (7.9) | 1.250 (3.2) | 2.000 (5.1) | 1/4 (0.6) | 1/2 (1.3) | 1/2 (1.3) | 1/8 (0.3) | 1/8 (0.3) | 1.250 (3.2) | B |
| MLHSRHMJHJLME | 3/4 | 5.875 (14.9) | 7.825 (19.4) | 2.000 (5.1) | 3.750 (9.5) | 1.500 (3.8) | 2.375 (6.0) | 3/8 (1.0) | 3/4 (1.9) | 3/4 (1.9) | 1/4 (0.6) | 1/8 (0.3) | 1.000 (2.5) | B |
| MLHSRHMJHJLME | 1 | 7.125 (18.1) | 9.125 (23.2) | 2.250 (5.7) | 4.250 (10.8) | 1.750 (4.4) | 2.750 (7.0) | 1/2 (1.3) | 3/4 (1.9) | 3/4 (1.9) | 1/4 (0.6) | 1/8 (0.3) | 1.750 (4.4) | B |
| MLHSRHMJHJLME | 1 1/4 | 8.000 (22.4) | 11.250 (28.6) | 2.500 (6.4) | 4.750 (12.1) | 2.250 (5.7) | 3.375 (8.6) | 3/4 (1.9) | 1 (2.5) | 1 (2.5) | 1/4 (0.6) | 1/4 (0.6) | 2.250 (5.7) | B |
| SL MLSCNCHMHLME | 1 1/2 | 11.000 (27.9) | 13.500 (34.3) | 2.750 (7.0) | 5.250 (13.3) | 2.500 (6.4) | 3.000 (7.6) | 1 (2.5) | 1 1/4 (3.2) | 1 1/4 (3.2) | 1/2 (1.3) | 1/2 (1.3) | 2.750 (7.0) | A |
| SL MLSCNCHMHLME | 2 | 14.375 (36.5) | 17.375 (44.1) | 3.125 (7.9) | 6.125 (15.6) | 3.000 (7.6) | 4.438 (11.3) | 1 1/4 (3.2) | 2 (5.1) | 2 (5.1) | 3/4 (1.9) | 3/4 (1.9) | 3.000 (7.6) | A |
| SL MLSCNCHMHLME | 2 1/2 | 18.125 (46.0) | 21.825 (54.9) | 3.500 (8.9) | 7.000 (17.8) | 4.125 (10.5) | 6.000 (15.2) | 1 1/2 (3.8) | 2 1/2 (6.4) | 2 1/2 (6.4) | 1 (2.5) | 1 (2.5) | 4.125 (10.5) | A |
| SL MLHSRHMJHJLME | 3 | 23.875 (60.0) | 27.875 (70.8) | 4.000 (10.2) | 8.000 (20.3) | 5.000 (12.7) | 7.312 (18.6) | 2 (5.1) | 3 (7.6) | 3 (7.6) | 3/4 (1.9) | 3/4 (1.9) | 5.000 (12.7) | A |

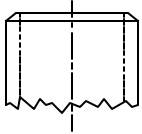
* O.D. IS 1/4

OPTIONAL GAGE PORT NOZZLE

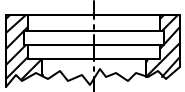
OPTIONAL CONNECTIONS FOR GAGE PORT NOZZLE



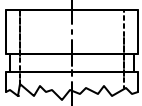
GAGE PORT SHOWN IN LOCATION B



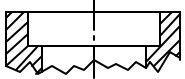
SCH 80 BUTT WELD



SILBRAZZ



VICTAULIC



SOCKET WELD



FEMALE NPT