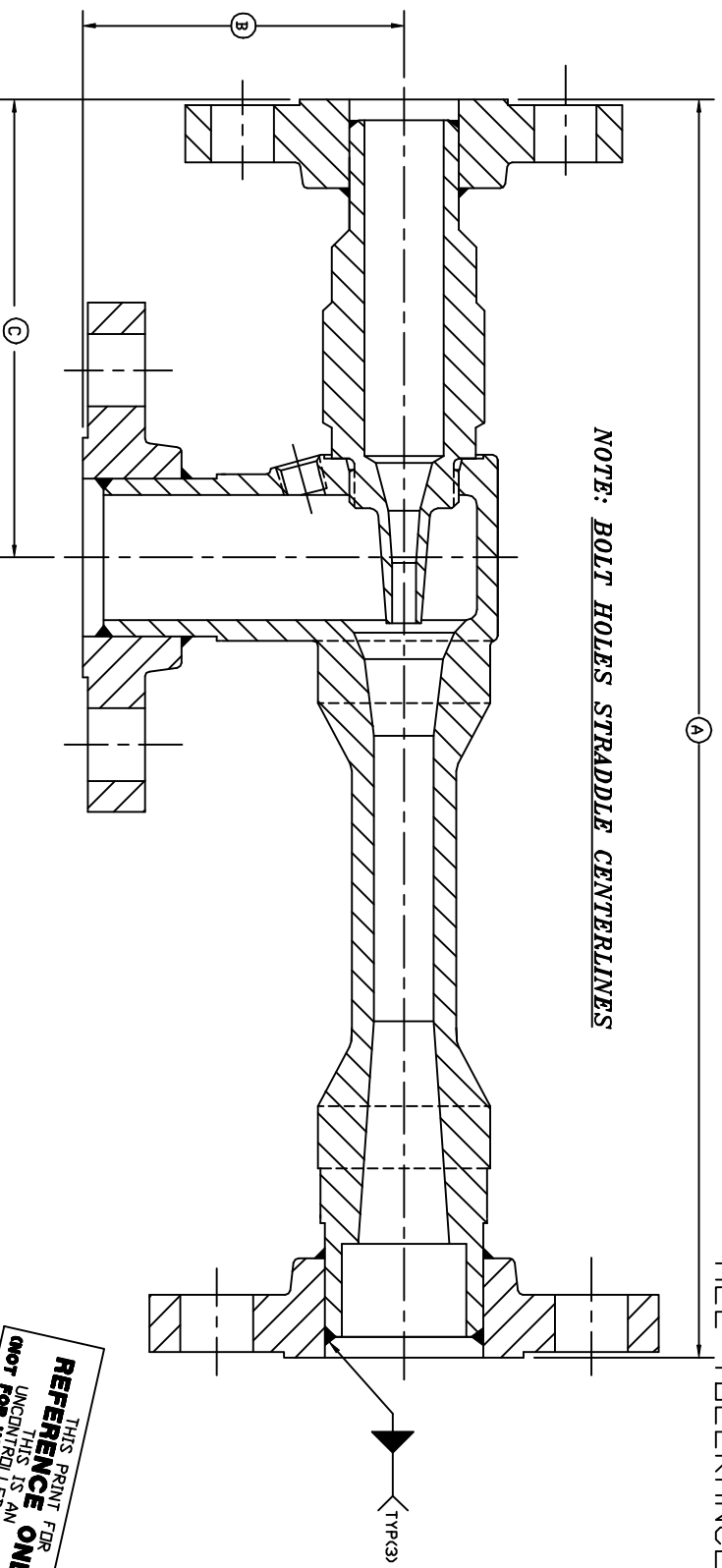


MATERIAL: SEE PART DWGS.
 DRAWN: BAB CHECKED: X
 SCALE: NONE DATE: 09/21/95
 REV. 1 PER CDC 95-201/DEP

CLARK-RELIANCE CORP.
STRONGSVILLE, OHIO, U.S.A.

ASSEMBLY, WELD
 FLANGED EDUCTOR
 PART NO.: TA 3855-
 TOLERANCE CLASS: N/A

DRAWING
 NUMBER:
 A-3855
 REV.
 1



NOTE: BOLT HOLES STRADDLE CENTERLINES

(BUTT WELD CONNECTIONS W/SLIP-ON FLANGES SHOWN)

P/N	MODEL	SIZE	INCHES (mm)		
			A 150# & 300# FLANGE	B 150# & 300# FLANGE	C 150# & 300# FLANGE
-1	SL,ML,HL,SG,HG,MLH,MLE	1/2	7.00 (178)	2.25 (57)	3.12 (79)
-2	SL	3/4	8.75 (222)	2.62 (67)	3.75 (95)
-3	ML,HL,SG,HG,MLH,MLE		9.00 (229)	2.62 (67)	4.00 (102)
-4	SL,ML,HL,SG,HG,MLH,UJ,MLE	1	10.62 (270)	3.00 (98)	4.50 (114)
-5	SL,ML,HL,SG,HG,MLH,UJ,MLE	1 1/4	12.88 (327)	3.62 (92)	5.00 (127)
-6	SL,ML,HL,SG,HG,MLH,UJ,MLE	1 1/2	15.12 (384)	3.88 (98)	5.50 (140)
-7	SL,ML,HL,SG,HG,MLH,UJ,MLE	2	19.00 (483)	4.38 (111)	6.38 (162)
-8	SL,ML,HL,SG,HG,MLH,UJ,MLE	2 1/2	23.75 (603)	6.00 (152)	7.25 (184)
-9	SL,ML,HL,SG,HG,MLH,UJ,MLE	3	30.00 (762)	6.88 (175)	8.25 (210)

THIS PRINT FOR
 REFERENCE ONLY!
 UNCONTROLLED COPY
 NOT FOR USE IN PRODUCTION

Northeast Controls Incorporated
 PO Box 275 - Upper Saddle River, NJ 07458 USA
 Tel: 201-327-7660 | Fax: 201-327-3242
 www.northeastcontrolsinc.com

NOTE: MODELS SL, ML, HL, SG, MLH, MLE SIZE 1/2 HAVE NO FLANGE ON NOZZLE END
 MODEL SL SIZE 3/4 HAS NO FLANGE ON NOZZLE END

ALL TOLERANCES ±.125